

ROCO Butterfly Valves, DIN EN 593, PN 16

of ductile cast iron

with slider-crank mechanism SKG and handwheel

DIN-DVGW tested and approved for gas and water services, reg. No.: NV-6201BL0439

Range of application		For installation in plants/chambers/(buried service)/submersible Water up to max. 70 °C			Gas up to max. 70 °C	
Size	Pressure rating	Hydrost. test pressure in bars for		Max. adm. working pressure in bars at 70 °C	Range of application and tests for gas-line service to DIN 2470, part 1	Range of application and tests for use in gas supply plants to DIN 30 690, part 1
DN	PN	body water	seat water			
150 - 600	16	25	17,6	16	Pressure tests to DIN 3230, part 5, PG 1	Pressure tests to DIN 3230, part 5, PG 3

When placing the order, please specify application, flow medium, working pressure, and working temperature.

Flange B DN 150 - 600, PN 16, DI, type 21, EN 1092-2.

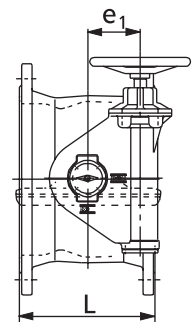
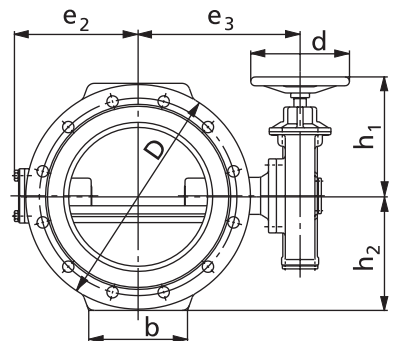
Materials / Equipment

Prod. No.	5065 9566	5065 7266	On request
Corrosion protection of body components	EKB epoxy coating, blue, RAL 5015	Vitreous enamel Internal: ERHARD vitreous enamel ¹⁾ , cobalt blue External: EKB epoxy coating, blue, RAL 5015	Special coating possible
Body	Ductile cast iron EN-JS1030	Ductile cast iron EN-JS1030 ⁷⁾ / ERHARD vitreous enamel	⁴⁾
Body seat	Austenitic CrNi steel	ERHARD vitreous enamel	⁴⁾
Valve disc (double offset)	Ductile cast iron EN-JS1030 ⁷⁾ / EKB	Ductile cast iron EN-JS1030 ⁷⁾ / EKB	Ductile cast iron EN-JS1030 ⁷⁾ / ERHARD vitreous enamel ⁴⁾
Profile sealing ring vulcanized on clamping ring	Steel St 37 / elastomer ²⁾	Steel St 37 / elastomer ²⁾	⁴⁾
Valve shafts	Ferritic chrome steel	Ferritic chrome steel	⁴⁾
Shaft bearing bushes (maintenance-free)	Steel / tin / PTFE	Steel / tin / PTFE	Stainless steel / PTFE ⁴⁾
Sealing of shaft bore	Elastomer ²⁾	Elastomer ²⁾	⁴⁾
Bolts (wetted)	S.S. A4	S.S. A4	
Outside bolts	S.S. A2	S.S. A2	
Slider-crank mechanism SKG	Enclosure rating IP 68		
Gearbox case	Lamellar cast iron EN-JL-1040 ⁷⁾ / EKB		
Handwheel	Steel / EKB		
Slider crank	DI / steel (burnished)		
Stem nut	Special brass		
Stem	Ferritic chrome steel		
Gearbox arrangement	To print 3/G19 Page 2 "Gearbox Arrangement", Pattern 1		Pattern 2 - 8

Dimensions

Size	Face-to-face dimension ⁵⁾ L mm	Flange dia. D mm	Space requirement					Feet		Turns Open-Closed	Weight ³⁾ kg
			d mm	e1 mm	e2 mm	e3 mm	h1 mm	b mm	h2 mm		
150	210	285	200	85	155	222	222	150	148	18	39
200	230	340	200	85	180	246	222	160	175	18	51
250	250	400	200	105	228	303	244	180	205	25	76
300	270	455	200	105	253	328	244	200	230	25	95
350	290	520	250	105	295	390	321	225	270	29	175
400	310	580	250	105	321	418	321	250	295	29	192
450	330	640	250	125	364	452	346	250	325	36	248
500	350	715	250	125	390	492	346	300	360	36	290
600	390	840	350	155	438	465	460	330	425	37	429

 epoxy coating
EKB
 epoxy coating


**echtes
email**


- ¹⁾ For details on ERHARD vitreous enamel, see leaflet "ERHARD Enamel".
- ²⁾ DVGW/KTW approval for gas and water.
- ³⁾ Net (without obligation).
- ⁴⁾ Other materials available on request.
- ⁵⁾ Face-to-face dimensions to DIN EN 558-1, basic serie 14.
- ⁶⁾ Corresponding to former DIN description 0.7040 (GGG-40).
- ⁷⁾ Corresponding to former DIN description 0.6125 (GG-25).